

Soft Water  
As Nature Intended!



You'll Benefit From Soft Water:

- 3 Silky, shiny hair
- 3 Beautiful soft, supple skin
- 3 Crystal clear dishes & glassware
- 3 Bright whites & vibrant colors
- 3 Easier cleaning
- 3 Use up to 50% less shampoo & soap<sup>1</sup>
- 3 Use up to 70% less dishwashing detergent<sup>1</sup>
- 3 Lower water heating costs by 30%<sup>2</sup>
- 3 Protect plumbing & water-using appliances
- 3 Extend life of laundry
- 3 Save as much as \$479 annually<sup>2</sup>

\*Water Quality Research Foundation Studies (¹ 2010 Detergent Savings Study; ² 2009 Energy Savings Study).



Canature™

Canature is a Global Leader in the manufacture of high quality, innovative residential & commercial water conditioning products. All softeners are Engineered, Assembled & Tested in the U.S.A. & Canada.

Industry Leaders in  
Innovation, Quality & Value



Specifications	58SHE-75C	58SHE-100C	58SHE-75	58SHE-100	58SHE-150	58SHE-200	58SHE-300
With Tank Jacket	15010250	15010251	15010252	15010253	15010254	15010258	15010259
Without Tank Jacket			15010255	15010256	15010257		
Optional Settings - High Efficiency							
Salt Used - Per Regeneration	2.3 lbs	3.0 lbs	2.3 lbs	3.0 lbs	4.5 lbs	6.0 lbs	9.0 lbs
Water Used - Regeneration	22.7 gal	28.3 gal	22.6 gal	31.6 gal	44.3 gal	60.9 gal	102.2 gal
Hardness Removal - Grains	11,250	15,000	11,250	15,000	22,500	30,000	45,000
Factory Settings - Standard Capacity							
Salt Used - Per Regeneration	4.5 lbs	6.0 lbs	4.5 lbs	6.0 lbs	9.0 lbs	12.0 lbs	18.0 lbs
Water Used - Regeneration	40.5 gal	48.6 gal	34.0 gal	43.4 gal	62.7 gal	87.1 gal	139.2 gal
Hardness Removal - Grains	18,750	25,000	18,750	25,000	37,500	50,000	75,000
Optional - High Capacity							
Salt Used - Per Regeneration	7.5 lbs	10.0 lbs	7.5 lbs	10.0 lbs	15.0 lbs	20.0 lbs	30.0 lbs
Water Used - Regeneration	56.1 gal	69.5 gal	49.6 gal	64.3 gal	90.3 gal	124.6 gal	196.2 gal
Hardness Removal - Grains	22,500	30,000	22,500	30,000	45,000	60,000	90,000
Resin Quantity - Cubic Feet	0.75 ft³	1.0 ft³	0.75 ft³	1.0 ft³	1.5 ft³	2.0 ft³	3.0 ft³
Tank Size	9x35	10x35	8x44	9x48	10x54	12x52	14x65
Tank Jacket Available / Media Loaded	Cabinet / Yes	Cabinet / Yes	No	No	No	No	No
Brine Tank / Cabinet Size (Inches)	16.5 x 19.3 x 14.3	16.5 x 19.3 x 14.3	18.1 x 34.5	18.1 x 34.5	18.1 x 34.5	20.3 x 37.4	23.0 x 40.5
Salt Storage Capacity	175 lbs	175 lbs	240 lbs	240 lbs	240 lbs	350 lbs	420 lbs
Flow Rate @ 15 psi Pressure Drop	11.6 gpm	12.0 gpm	10.4 gpm	11.0 gpm	11.2 gpm	12.2 gpm	12.6 gpm
Flow Rate @ 25 psi Pressure Drop	15.6 gpm	16.0 gpm	14.3 gpm	15.0 gpm	15.1 gpm	16.2 gpm	16.6 gpm
Back Wash Flow Rate	2.0 gpm	2.4 gpm	1.5 gpm	2.0 gpm	2.4 gpm	3.5 gpm	5.0 gpm
Shipping Weight	93 lbs	110 lbs	105 lbs	122 lbs	155 lbs	158 lbs	244 lbs
Regeneration Type	Counter Current / Up Flow						
Maximum Efficiency	5,060 grains / lb salt						
Plumbing Connections	3/4" (Optional 1")						
Resin Type	Canature 8% High Capacity Ion Exchange Resin						
Electrical Requirements	Input 120V 60 Hz - Output 12V 650mA						
Water Temperature	Min 39 - Max 100 degrees Fahrenheit						
Water Pressure	Min 20 - Max 125 psi						

Canature™ Professional Series Water Conditioning Products are only available through Canature Factory Authorized Professional Water Dealers.



www.canaturepro.com



80153000

High Efficiency  
Water Softener



Soft Water... Naturally!

PROFESSIONAL SERIES

Hard Water  
Costs You Money!

Hard water is a common problem caused by dissolved minerals calcium and magnesium.

Left untreated, hard water is very costly!

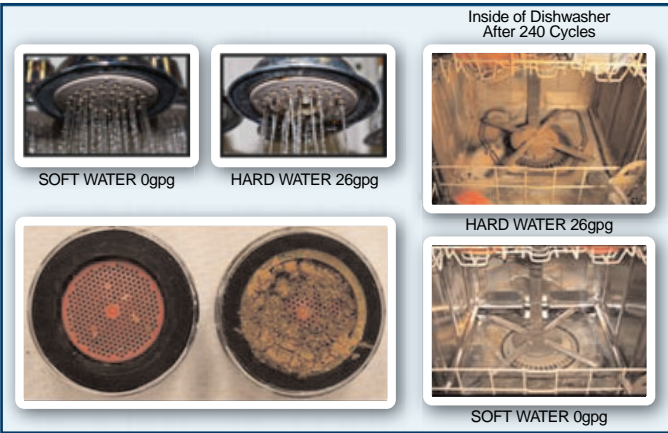
The minerals react adversely with heat and soap causing the formation of troublesome scale in pipes & fixtures and soap curd or 'scum' on skin, hair and laundry.



Water Hardness	G.P.G.
Very Hard	>10.5
Hard	7.0 - 10.5
Moderate	3.5 - 7.0
Soft	0.0 - 3.5



Hard Water + Heat = Scale  
Hard Water + Soap = Scum



Effects on Water Heaters

- 3 Instant water heaters on hard water failed after 1.6 years
- 3 Gas water heaters lost 24% efficiency
- 3 Electric water heaters accumulate 0.4 pounds of scale for every 5 gpg of hardness.\*



Clogged pressure regulator strainer on instant water heater.



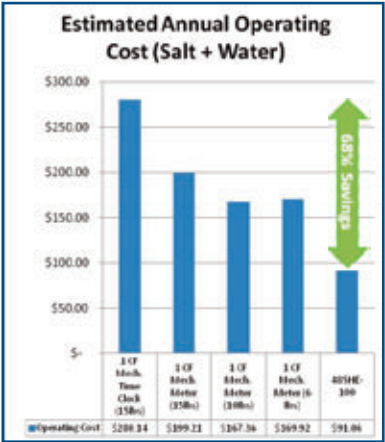
Water Softeners  
Are Not All Created Equal!

Professional Series  
High-Efficiency Water Softeners

Advanced Features  
Save Money & Protect The Environment!

Many softeners still use decade old technology. Inefficient timeclock and mechanical meter controlled systems have fixed settings engineered to cover the worst hardness conditions. That means they use much more salt and water than necessary in most cases.

Professional Series Water Softeners can be customized for your specific water quality lowering operating costs by up to 68%. by using up to 75% less salt and 64% less water!<sup>3</sup>



<sup>3</sup> Based on family of 4 on 20 gpg hardness. Salt \$6 per bag. Water \$0.0137 per Gallon



24 less bags of salt a year? That's over a 1000 lbs!



Cabinet

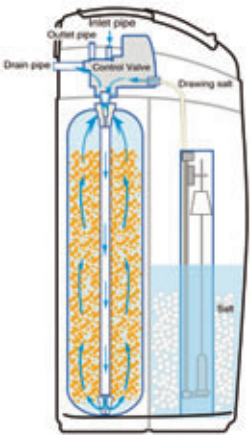
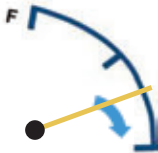
Traditional Twin Tank



Cabinet features convenient sliding salt lid & detachable salt tank for easy cleaning!  
Twin tank comes with optional condensation jacket.

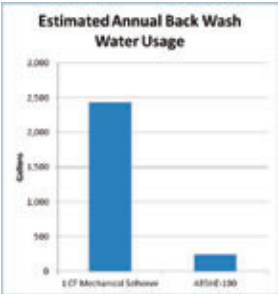
Upflow Regeneration never depletes the unused portion of the salt charged softening resin.

Traditional downflow softeners unnecessarily deplete the unused portion of the bed every time.



Downflow regeneration is like draining your gas tank before filling up your car!

Optimal Precision Brining uses the precise amount of salt to regenerate only the used portion of the resin bed - saving up to 30% more salt!



Adjustable Backwash Frequency can save up to 2,000 gallons of water annually! For clean city water there is no need to backwash with every regeneration. The backwash frequency can now be preset to meet your specific water quality needs.

Soft Water Brine Tank Refill conserves capacity and keeps brine tank clean by adding only treated soft water back into your salt tank.

Automatic System Flush "refreshes" system with a short backwash and rinse every seven days if water has not been used preventing bacteria growth.

Soft Water Recharge ensures you never run out of soft water due to unusual spikes in water usage. The system will automatically perform a quick "recharge" restoring enough capacity until the softener performs a full regeneration overnight

Additional Features:

- 3 Large LED backlit screen continuously rotates key operational data like volume remaining
- 3 Simple electronics. No confusing codes!
- 3 NSF Certified control valve & pressure tank
- 3 WQA Gold Seal Approved resin
- 3 Brine safety valve for added overflow protection
- 3 Super-capacitor memory stores settings
- 3 Uses less than \$2.00 electricity annually



Seven Year Warranty Control Valve



Lifetime Warranty Pressure Tank



NSF COMPONENT

How Does a Water Softener Work?

Raw water containing the hardness minerals calcium and magnesium runs through a bed of sodium charged exchange resin beads contained in a fiberglass pressure tank.

The hardness ions have a stronger attraction to the resin beads and exchange with the harmless sodium ions. Eventually the resin contains only hardness minerals and has to be regenerated.



When regeneration is necessary, the system is backwashed as required to rinse away impurities.

A strong brine solution is then drawn from the salt tank and through the resin contained in the pressure tank. The hardness ions are released from the resin beads in exchange for the concentrated sodium ions and finally rinsed to the drain. The system is ready to soften again.

Common Water Softener Myths

**Myth:** Softeners put unhealthy amounts of salt into my drinking water!

**Fact:** An 8-ounce glass of softened water contains less than 12.5 mg. of sodium, which is well within the FDA's definition of "very low sodium."

**Myth:** Do salt-free softeners soften water?

**Fact:** No! Salt-free softeners (a.k.a. descalers) don't soften or remove hardness minerals.